

# IMMERSION THERMOSTATS

## USE

- Thermostats for direct piping installation; standard execution with immersion pocket.
- Suitable for boilers, heating installations, circulators, burners, AHU, etc.

## INSTALLATION AND OPERATION

- Liquid expansion sensing element.
- Direct installation by means of a threaded G 1/2" pocket (included in the packaging).

## TECHNICAL FEATURES

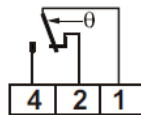
- Stainless steel sensing element membrane.
- Copper bulb and capillary.
- PN 10 Copper pocket with G 1/2" connection.
- Base, cover and knob are in V0 self-extinguishing, antishock thermoplastic material.
- PVC grommet for cable entry. G 1/2 " cable gland available on request (see accessories)

## HOMOLOGATION AND STANDARDS

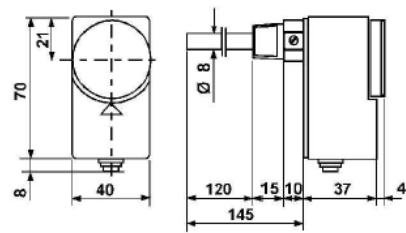
- Complies with CEI EN 60947-5-1 standards
- VDE homologation
- C03A with I.S.P.E.S.L. Homologation

## ELECTRICAL FEATURES

- Snap action SPDT microswitch with AgCdO contacts.
- When temperature rises: 1-2 opens 1-4 closes



Nominal insulation tension:	Ui 380V~		
Continuous duty nominal current	Ith 15A		
Operating nominal current Ie:	220V- 250V~ 380V~		
Resistive load	AC-12	-	10A 10A
Inductive load	AC-15	-	2.5A 1.5A
Direct current	DC-13	0.2A	- -



TIPO	Range °C	Differential * K	Differential accuracy °C	Max allowable body temperature °C ♦	Max element temperature °C	Protection	Weight Kg	Box pcs. N°
C03A2	10 to 90	6±1	±3	-35 to 120	150	IP40	0.22	
C03B2	40 to 120	6±1	±3	-35 to 120	150	IP40	0.21	

\* The differential value must be deducted from the set value  
Differential values refer to a temperature rising speed of 1K/Min

♦ Transport and storage temperatures are equivalent to the max. allowable thermostat body temperature

## ACCESSORIES

G 1/2 " cable gland in VO self-extinguishing, antishock, thermoplastic material. Code 303298L

## SPECIAL EXECUTIONS (only for high qty, please ask for offer)

- Special temperature range.....C03A 0 to 80°C
- Internal setting.....C03A RI
- Customized knob

## EXAMPLE : ELECTRICAL WIRING

