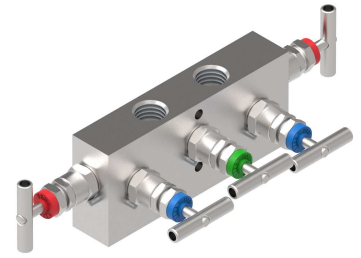
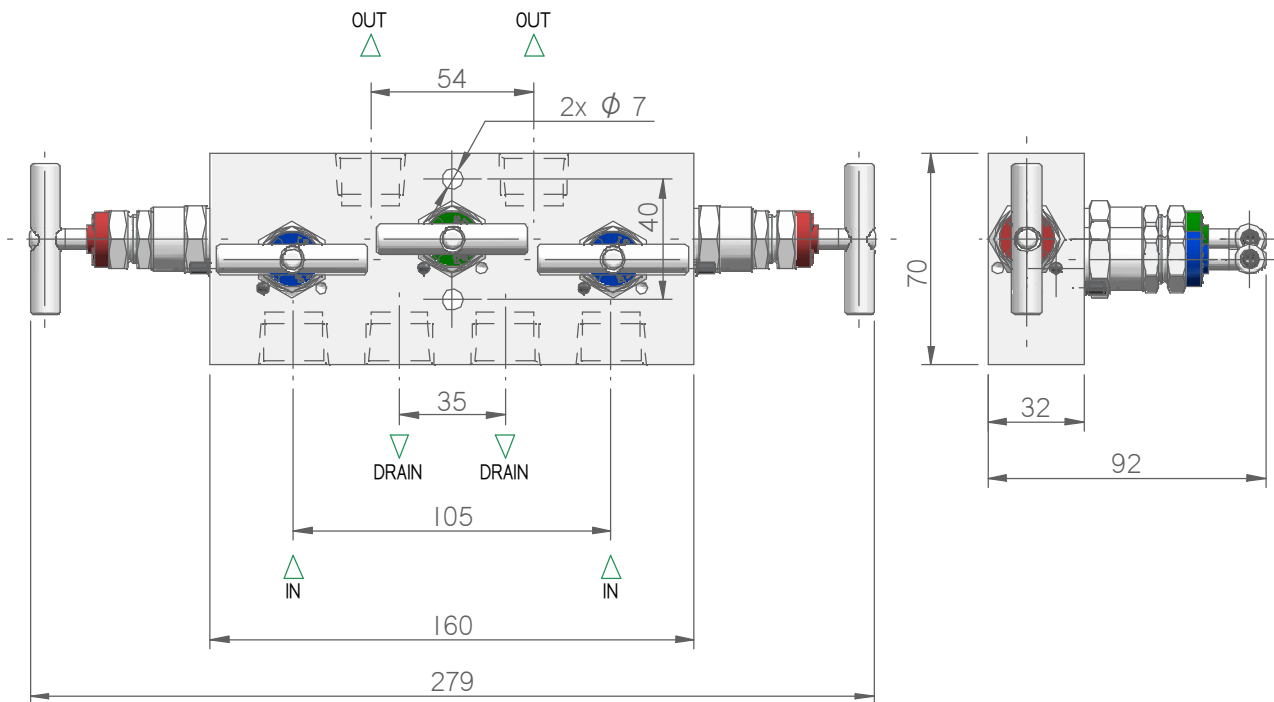
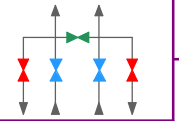


MODEL: M51

REMOTE MOUNTED MANIFOLD



This manifold are designed for remote installation from Pressure Instruments or Differential Pressure Transmitters.



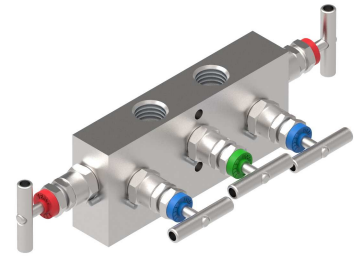
MODEL SELECTION

MODEL	RATING	MATERIAL	PACKING	IN	OUT	VENT	CODE	WEIGHT	NOTE	
M51	6K psi	AISI 316L	PTFE	1/2" NPT-F	1/2" NPT-F	1/2" NPT-F	M51-06ST8N8N8	3,2 Kg	Packing material PTFE as standard max temperature 180 °C. The dimensions shown apply only to the illustrated valve – if you need the dimensions for your individual type or should you still not find your options at all please contact the factory.	
		ASTM A105					M51-06AT8N8N8			
		F51					M51-06DT8N8N8			
		F55					M51-06ET8N8N8			
		ALLOY 400					M51-06FT8N8N8			
		C276					M51-06GT8N8N8			
		6MO					M51-06HT8N8N8			
		I625					M51-06IT8N8N8			
		10K psi					AISI 316L			M51-10ST8N8N8
							ASTM A105			M51-10AT8N8N8
	F51						M51-10DT8N8N8			
	F55						M51-10ET8N8N8			
	ALLOY 400						M51-10FT8N8N8			
	C276						M51-10GT8N8N8			
	6MO						M51-10HT8N8N8			
	I625						M51-10IT8N8N8			

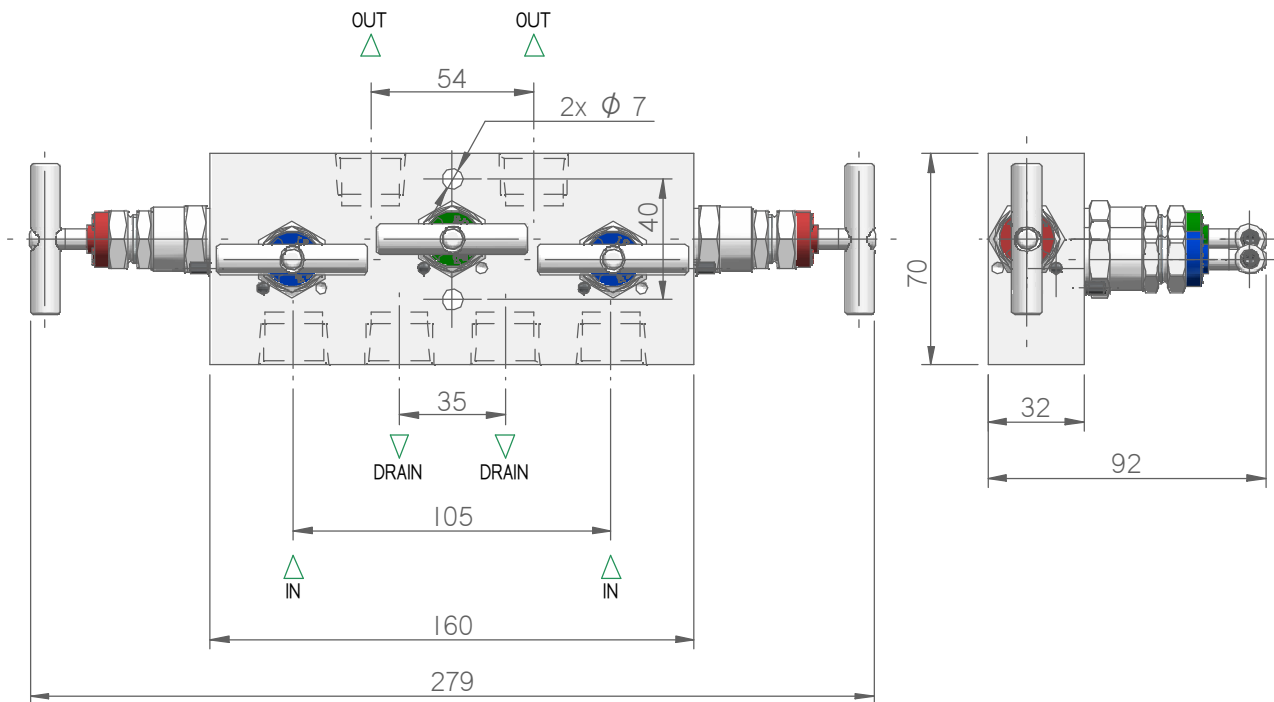
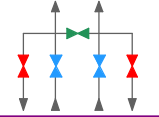
I.T.E. s.r.l. COMMITS ITSELF TO CONSTANTLY IMPROVE ITS PRODUCTS AND THEREFORE IT RESERVES THE RIGHT TO MODIFY DATA, FEATURES WITHOUT NOTICE.

MODEL: M51

REMOTE MOUNTED MANIFOLD



This manifold are designed for remote installation from Pressure Instruments or Differential Pressure Transmitters.



MODEL SELECTION

MODEL	RATING	MATERIAL	PACKING	IN	OUT	VENT	CODE	WEIGHT	NOTE	
M51	6K psi	AISI 316L	PTFE	1/2" NPT-F	1/2" NPT-F	1/2" NPT-F	M51-06SG8N8N8	3,2 Kg	Packing material GRAPHOIL as standard max temperature 500°C. The dimensions shown apply only to the illustrated valve – if you need the dimensions for your individual type or should you still not find your options at all please contact the factory.	
		ASTM A105					M51-06AG8N8N8			
		F51					M51-06DG8N8N8			
		F55					M51-06EG8N8N8			
		ALLOY 400					M51-06FG8N8N8			
		C276					M51-06GG8N8N8			
		6MO					M51-06HG8N8N8			
		I625					M51-06IG8N8N8			
		10K psi					AISI 316L			M51-10SG8N8N8
							ASTM A105			M51-10AG8N8N8
	F51						M51-10DG8N8N8			
	F55						M51-10EG8N8N8			
	ALLOY 400						M51-10FG8N8N8			
	C276						M51-10GG8N8N8			
	6MO						M51-10HG8N8N8			
	I625						M51-10IG8N8N8			

I.T.E. s.r.l. COMMITS ITSELF TO CONSTANTLY IMPROVE ITS PRODUCTS AND THEREFORE IT RESERVES THE RIGHT TO MODIFY DATA, FEATURES WITHOUT NOTICE.