

SPECIAL FEATURES

- STAINLESS STEEL CASE & MEASURING SYSTEM
- DRY OR LIQUID VERSION
- STANDARD FOLLOWED EN 837 - 1

**APPLICATIONS**

FOOD & BEVERAGE, PHARMACEUTICAL,
REGULATORS, PUMPS, HYDRO-CLEANING
MACHINES, PRESSES, ENGINE COMPRESSORS,
TURBINES, DIESEL ENGINES & REFRIGERATING
PLANTS

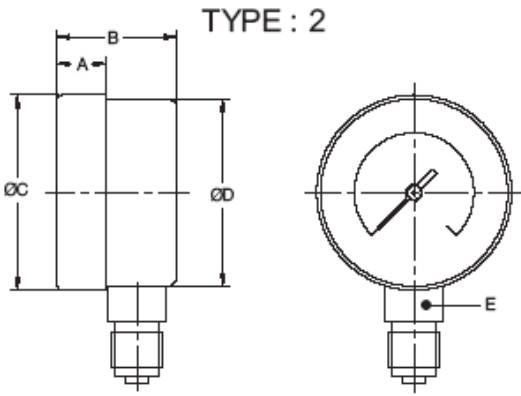
SPECIFICATIONS

STANDARD VERSION : 40mm, 50mm

Accuracy	: ± 2.5 % of F.S.
Ambient temperature	: - 40°C to + 60°C
Process temperature	: Max. 180°C
Operating pressure	: 75 % of the scale value
Over pressure limit	: 25 % for pressure ranges up to 100 kg/cm ² 15 % for pressure ranges above 100 kg/cm ²

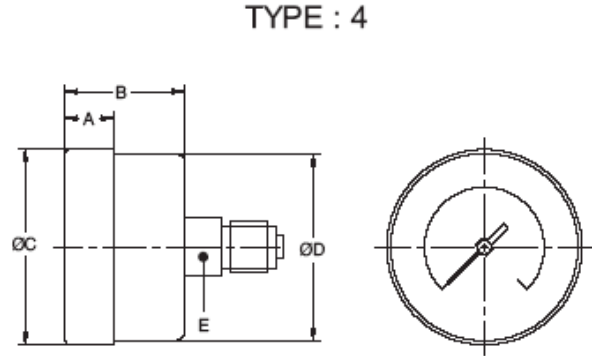
Case	: AISI 304 SS
Ring	: AISI 304 SS (push fit type for 40mm & Bayonet type for 50mm)
Socket	: AISI 316 SS
Bourdon	: AISI 316 SS
Movement	: AISI 304 SS
Joints	: TIG argon arc welding

Dial	: Aluminium, black graduation on white background
Pointer	: Aluminium, black coloured, Fixed.
Window	: Sheet Glass
Gasket	: Silicon Rubber



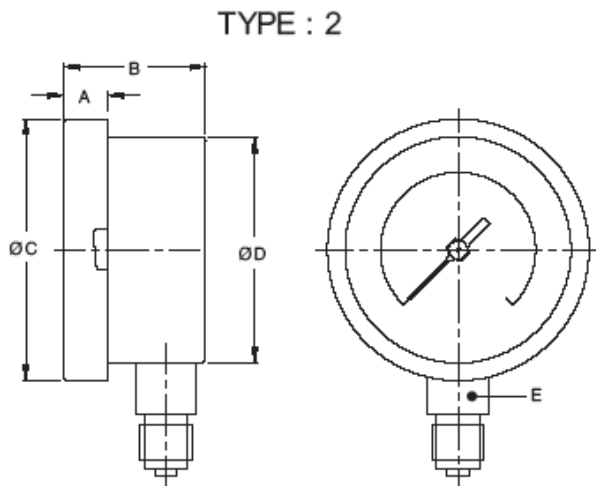
PUSH FIT TYPE (STANDARD)

NS	A	B	ØC	ØD	E	Weight in gram (With Box)
40	8	25	43	41	11	77.0



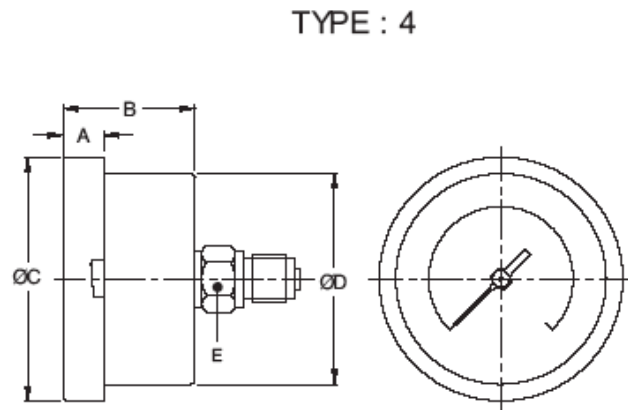
PUSH FIT TYPE (STANDARD)

NS	A	B	ØC	ØD	E	Weight in gram (With Box)
40	8	25	43	41	11	80.0



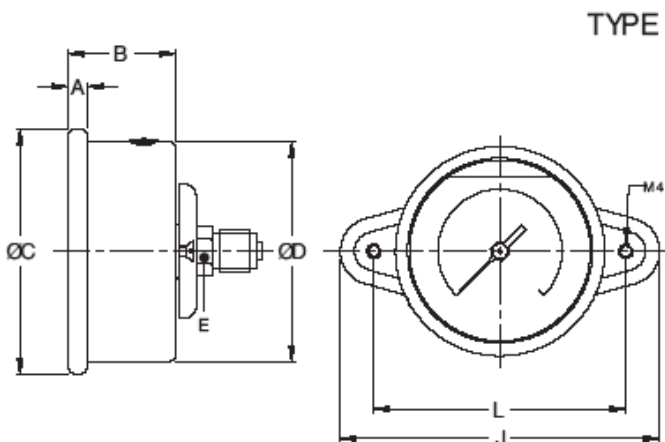
BAYONET TYPE (STANDARD)

NS	A	B	ØC	ØD	E	Weight in gram (With Box)
50	10	31	59	51	14	136.0



BAYONET TYPE (STANDARD)

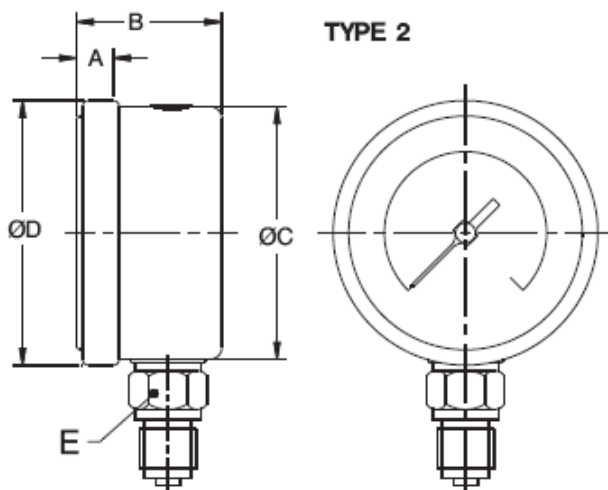
NS	A	B	ØC	ØD	E	Weight in gram (With Box)
50	10	31	59	51	14	162.0



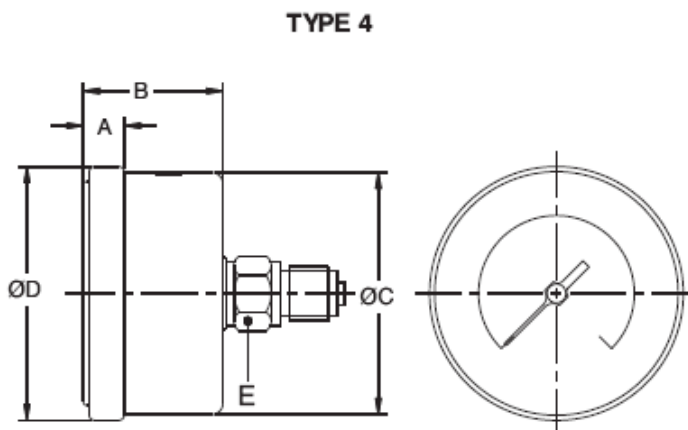
ROLLING TYPE FOR FILLED VERSION (STANDARD)

NS	A	B	ØC	ØD	E	L	J	Weight in gram (With Box) Liquid filled
50	5	29	57	51.5	A/F 14	71	91	243.5

Notes : • Drawings are not to scale. • All Dimensions are in mm. • NS = Nominal Size.



TYPE 2



TYPE 4

ROLLING TYPE (OPTION)

NS	A	B	ØC	ØD	E	Weight in gram (With Box)
50	4.5	29.0	51.5	57.5	14	118.5

ROLLING TYPE (OPTION)

NS	A	B	ØC	ØD	E	Weight in gram (With Box)
50	4.5	29.0	51.5	57.5	14	118.5

RANGE TABLE

Note : Manufacturer offers Pressure ranges, Vacuum ranges and Compound ranges in Scales like kPa, MPa, bar, psi, kg/cm² & Dual Scale like kPa with psi, kPa with bar, bar with psi or scales as per the requirement can be provided on request.

Following are the example tables for kg/cm² & psi scales

PRESSURE RANGE

RANGE (PSI with kg/cm ²)		40	50
RANGE PSI	RANGE kg/cm ²		
-30 inHg / 0	-760 mmHg / 0	×	✓
0/15 psi	0/1 kg/cm ²	×	✓
0/30psi	0/2 kg/cm ²	✓	✓
0/60 psi	0/4 kg/cm ²	✓	✓
0/100 psi	0/7 kg/cm ²	✓	✓
0/150 psi	0/10 kg/cm ²	✓	✓
0/200 psi	0/14 kg/cm ²	✓	✓
0/300 psi	0/21 kg/cm ²	✓	✓
0/400 psi	0/28 kg/cm ²	✓	✓
0/500 psi	0/35 kg/cm ²	✓	✓
0/600 psi	0/40 kg/cm ²	✓	✓
0/1000 psi	0/70 kg/cm ²	✓	✓
0/1500 psi	0/100 kg/cm ²	✓	✓
0/2000 psi	0/140 kg/cm ²	✓	✓
0/3000 psi	0/210 kg/cm ²	✓	✓
0/4000 psi	0/280 kg/cm ²	✓	✓
0/5000 psi	0/350 kg/cm ²	×	✓
0/6000 psi	0/400 kg/cm ²	×	✓

ACCESSORIES †

EC GAUGE COCK EG SNUBBER * NEEDLE VALVE

† Refer Datasheet for complete specifications * Refer catalogue for valves and manifolds

HOW TO ORDER

BASIC MODEL

CODE	B	C	AB
NOMINAL SIZE (mm)	40	50	B

TYPE OF MOUNTING

- 2 DIRECT BOTTOM ENTRY
4 DIRECT CENTRE BACK ENTRY
9 BACK ENTRY WITH MOUNTING BRACKET (ONLY FOR NS-50 mm & ROLLING TYPE DESIGN)

GAUGE CONNECTION

- 1BM 1/8" BSP (M) STANDARD
1NM 1/8" NPT (M) STANDARD
1TM 1/8" BSPT (M)
2NM 1/4" NPT (M) STANDARD
2BM 1/4" BSP (M) STANDARD
2TM 1/4" BSPT (M)

Note : Connections like PT/PF/Flaired /UNF/G/R etc. Can be provided on request.
Non standard connections can be provided through adaptors.

RANGE

REFER TABLES

OPTIONS

FOR NON STANDARD PRODUCTS/OPTIONAL ITEMS, PLEASE CONTACT FACTORY FOR DELIVERY AND MINIMUM QUANTITY OF ORDER.

- | | |
|---|---|
| PW FIVE POINT CALIBRATION CERTIFICATE | SG OXYGEN SERVICE |
| QB DAMPENING SCREW IN AISI 316 SS | RQ ENCLOSURE PROTECTION IP - 65
(IF BAYONET TYPE CASE & BEZEL) |
| RH CUSTOM DESIGNED DIAL | SX SS TAG PLATE |
| PY DAMPENING LIQUID GLYCERINE FILLED | FS FILLABLE LIQUID SILICON OIL* |
| QA DAMPENING LIQUID SILICON OIL FILLED* | FG FILLABLE LIQUID GLYCERINE |
| SQ CASE WITH ROLLING TYPE BEZEL | |

Note: Option PY, QA, FS, FG, SN are applicable for NS 50mm & Rolling type design.

* GASKET & FILLING PLUG OF VITON /NBR

Ordering Example:

AB - B - 2 - 2NM - 0/10kg/cm² - SX

Note : ● Due to continuous improvement, the specification may vary from time to time.