

Manometer-Kontroll-Dreiwegehähne

Manometer-control-three-way cocks

Manometerhähne sind für den Einsatz von Flüssigkeiten, Gasen und Dämpfen im Temperaturbereich von -10° C bis 50° C geeignet. Zum Anschluss an Manometer bitte Flachdichtungen DIN 16258 verwenden.

Werkstoff: Messing und Edelstahl 1.4571

Griff: Polypropylen

Kontrollanschluss: Prüfflansch oder Prüfanschluss

Für höhere Druckstufen und Temperaturen bzw. öl- und fettfreie Ausführungen sind Manometerabsperrentile einzusetzen.

Manometer gauge cocks find application for liquids, gas and steam. Temperature range of -10° C until 50° C. For connection to the manometer please use a sealing according DIN 16258.

Material: Brass and stainless steel 1.4571

Handle: Polypropylen

Control port: Test flange or test stud

For higher pressures and temperatures or oil- and grease-free execution, manometer shut-off valves should be used.

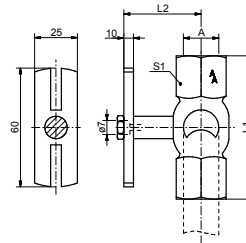
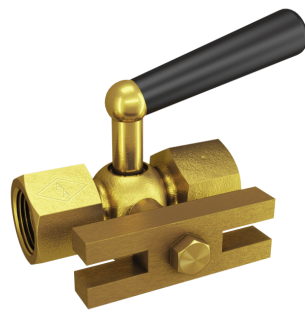


Fig. 30

Manometer-Absperrhahn, Muffe x Muffe x Prüfflansch 60 x 25 mm, Material: Messing

Manometer gauge cock, female thread x female thread x test flange 60 x 25 mm, material: brass

Figur	A	Flansch / mm	PN / bar	°C	L1 / mm	L2 / mm	S1	Art.Nr.
Fig. 30	G1/4	60x25	25	-10°C / +50°C	70	38	27	10030021S
Fig. 30	G1/2	60x25	25	-10°C / +50°C	70	38	27	10030041S

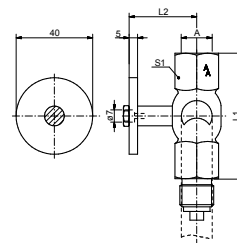


Fig. 30/A

Manometer-Absperrhahn, Muffe x Muffe x Prüfflansch 40 x 5 mm, Material: Messing

Manometer gauge cock, female thread x female thread x test flange 40 x 5 mm, material: brass

Figur	A	Flansch / mm	PN / bar	°C	L1 / mm	L2 / mm	S1	Art.Nr.
Fig. 30/A	G1/4	40x5	16	-10°C / +50°C	70	34	27	10030A021S
Fig. 30/A	G3/8	40x5	25	-10°C / +50°C	70	34	27	10030A031S
Fig. 30/A	G1/2	40x5	25	-10°C / +50°C	70	34	27	10030A041S

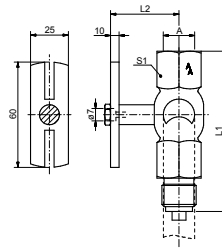


Fig. 31

Manometer-Absperrhahn, Muffe x Zapfen x Prüfflansch 60 x 25 mm, Material: Messing

Manometer gauge cock, female thread x male thread x test flange 60 x 25 mm, material: brass

Figur	A	Flansch / mm	PN / bar	°C	L1 / mm	L2 / mm	S1	Art.Nr.
Fig. 31	G3/8	60x25	25	-10°C / +50°C	74	38	27	10031031S
Fig. 31	G1/2	60x25	25	-10°C / +50°C	78,5	38	27	10031041

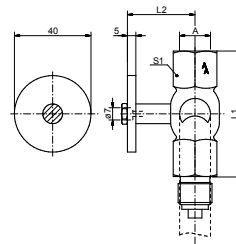


Fig. 31/A

Manometer-Absperrhahn, Muffe x Zapfen x Prüfflansch 40 x 5 mm, Material: Messing

Manometer gauge cock, female thread x male thread x test flange 40 x 5 mm, material: brass

Figur	A	Flansch / mm	PN / bar	°C	L1 / mm	L2 / mm	S1	Art.Nr.
Fig. 31/A	G1/4	40x5	6	-10°C / +50°C	58	36	27	10031A021S
Fig. 31/A	G3/8	40x5	25	-10°C / +50°C	58	36	27	10031A031S
Fig. 31/A	G1/2	40x5	25	-10°C / +50°C	58	36	27	10031A041S

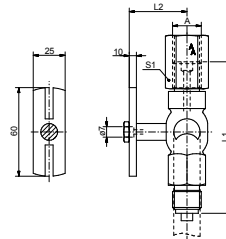


Fig. 34

Manometer-Absperrhahn, DIN 16263, Spannmuffe x Zapfen x Prüfflansch 60 x 25 mm, Material: Messing, 1.4571

Manometer gauge cock, DIN 16263, sleeve x male thread x test flange 60 x 25 mm, material: brass, 1.4571

Figur	A	Flansch / mm	DIN	PN / bar	°C	L1 / mm	L2 / mm	S1	Material	Art.Nr.
Fig. 34	G1/2	60x25	DIN 16263	25	-10°C / +50°C	80	36	27	Messing	10034041S
Fig. 34	G1/2	60x25	DIN 16263	16	-10°C / +50°C	80	55	27	1.4571	10034043S

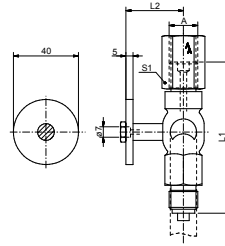


Fig. 34/A

Manometer-Absperrhahn, DIN 16263, Spannmuffe x Zapfen x Prüfflansch 40 x 5 mm, Material: Messing, 1.4571

Manometer gauge cock, DIN 16263, sleeve x male thread x test flange 40 x 5 mm, material: brass, 1.4571

Figur	A	Flansch / mm	DIN	PN / bar	°C	L1 / mm	L2 / mm	S1	Material	Art.Nr.
Fig. 34/A	G1/2	40x5	DIN 16263	25	-10°C / +50°C	80	36	27	Messing	10034A041S
Fig. 34/A	G1/2	40x5	DIN 16263	16	-10°C / +50°C	80	43	27	1.4571	10034A043

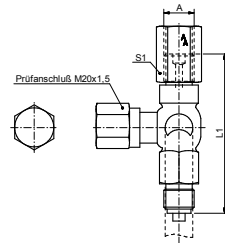


Fig. 35

Manometer-Absperrhahn, DIN 16263, Spannmuffe x Zapfen x Prüfzapfen M20 x 1,5, Material: Messing, 1.4571

Manometer gauge cock, DIN 16263, sleeve x male thread x test connector M20 x 1,5, material: brass, 1.4571

Figur	A	Prüfzapfen	DIN	PN / bar	°C	L1 / mm	S1	Material	Art.Nr.
Fig. 35	G1/2	M20x1,5	DIN 16263	25	-10°C / +50°C	80	27	Messing	10035041
Fig. 35	G1/2	M20x1,5	DIN 16263	16	-10°C / +50°C	80	27	1.4571	10035043

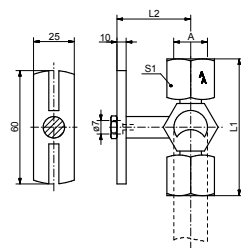


Fig. 50

Manometer-Stopfbuchshahn, Muffe x Muffe x Prüfflansch 60 x 25 mm, Material: Messing

Manometer gauge cock with stuffing box, female thread x female thread x test flange 60 x 25 mm, material: brass

Figur	A	Flansch / mm	PN / bar	°C	L1 / mm	L2 / mm	S1	Art.Nr.
Fig. 50	G1/2	60x25	25	-10°C / +50°C	70	40	24	10050041S

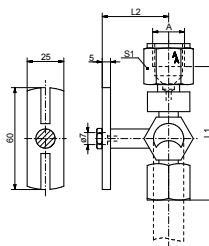


Fig. 52

Manometer-Stopfbuchshahn, lose Mutter x Muffe x Prüfflansch 60 x 25 mm, Material: Messing

Manometer gauge cock with stuffing box, nut adjustable x female thread x test flange 60 x 25 mm, material: brass

Figur	A	Flansch / mm	PN / bar	°C	L1 / mm	L2 / mm	S1	Art.Nr.
Fig. 52	G1/2	60x25	25	-10°C / +50°C	82	40	27	10052041

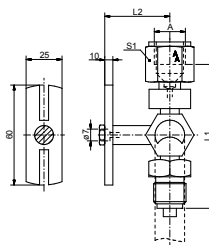


Fig. 53

Manometer-Stopfbuchshahn, lose Mutter x Zapfen x Prüfflansch 60 x 25 mm, Material: Messing

Manometer gauge cock with stuffing box, male thread x nut adjustable x test flange 60 x 25 mm, material: brass

Figur	A	Flansch / mm	PN / bar	°C	L1 / mm	L2 / mm	S1	Art.Nr.
Fig. 53	G1/2	60x25	25	-10°C / +50°C	87	36	27	10053041