

Siphons DIN 16282

Als Kühlstrecke für Flüssigkeiten, Dämpfe und Gase. Druckentnahme horizontal bzw. vertikal je nach Ausführung. Spannmuffen nach DIN 16283 (Figur 82).

Betriebsdruck:

- max. 160 bar bei 120° C Betriebstemperatur vor dem Wassersackrohr
- max. 120 bar bei 300° C Betriebstemperatur vor dem Wassersackrohr
- max. 100 bar bei 400° C Betriebstemperatur vor dem Wassersackrohr

Werkstoff: Stahl, Edelstahl 1.4571, 1.7335, 1.5415 jeweils aus nahtlosem Rohr

For cooling of liquids, steam and gases. Pressure connection horizontal resp. vertical, depends on design. Clamping sleeve acc. to DIN 16283 (figure 82).

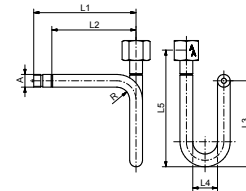
Operating pressure:

- max. 160 bar at 120° C operating temperature in front of the siphon
- max. 120 bar at 300° C operating temperature in front of the siphon
- max. 100 bar at 400° C operating temperature in front of the siphon

Material: steel, stainless steel 1.4571, 1.7335, 1.5415 in each case seamless pipes



Fig. 91

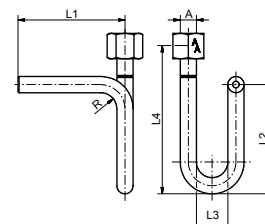


Siphon, DIN 16282-A, male thread x sleeve, U-shape, material: steel, 1.4571

DIN	A	L1 / mm	L2 / mm	L3 / mm	L4 / mm	L5 / mm	Material	Art.Nr.
DIN 16282 - Form A	G1/2	180	145	155	56	200	Stahl	10091042
DIN 16282 - Form A	G1/2	180	145	155	56	200	1.4571	10091043
DIN 16282 - Form A	G1/2	255	220	155	56	200	Stahl	10091A042
DIN 16282 - Form A	G1/2	255	220	155	56	200	1.4571	10091A043



Fig. 92

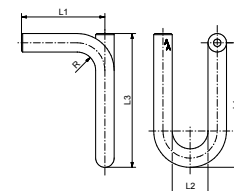


Siphon, DIN 16282-B, welding end x sleeve, U-shape, material: steel, 1.4571

DIN	A	L1 / mm	L2 / mm	L3 / mm	L4 / mm	Material	Art.Nr.
DIN 16282 - Form B	G1/2	145	155	56	200	Stahl	10092042
DIN 16282 - Form B	G1/2	145	155	56	200	1.4571	10092043
DIN 16282 - Form B	G1/2	220	155	56	200	Stahl	10092A042
DIN 16282 - Form B	G1/2	220	155	56	200	1.4571	10092A043



Fig. 93



Siphon, DIN 16282-F, welding end x welding end, U-shape, material: steel, 1.4571

DIN	A	L1 / mm	L2 / mm	L3 / mm	L4 / mm	Material	Art.Nr.
DIN 16282 - Form F	G1/2	145	56	165	155	Stahl	10093042
DIN 16282 - Form F	G1/2	145	56	165	155	1.4571	10093043

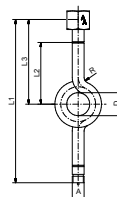


Fig. 96

Siphon, DIN 16282-C, male thread x sleeve, circular, material: steel, 1.4571

DIN	A	L1 / mm	L2 / mm	L3 / mm	D	Material	Art.Nr.
DIN 16282 - Form C	G1/2	275	95	130	56	Stahl	10096042
DIN 16282 - Form C	G1/2	275	95	130	56	1.4571	10096043

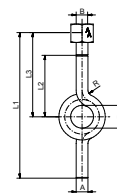


Fig. 97

Siphon, DIN 16282-D, welding end x sleeve, circular, material: steel, 1.4571

DIN	A	L1 / mm	L2 / mm	L3 / mm	D	Material	Art.Nr.
DIN 16282 - Form D	G1/2	240	95	130	56	Stahl	10097042
DIN 16282 - Form D	G1/2	240	95	130	56	1.4571	10097043

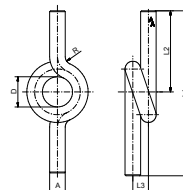


Fig. 98

Siphon, DIN 16282-G, welding end x welding end, circular, material: steel, 1.4571

DIN	A	L1 / mm	L2 / mm	L3 / mm	D	Material	Art.Nr.
DIN 16282 - Form G	G1/2	205	95	25	56	Stahl	10098042
DIN 16282 - Form G	G1/2	205	95	25	56	1.4571	10098043