

Siphons PN 25

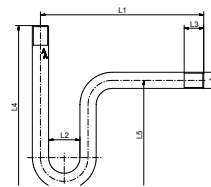


Fig. 90

Siphon, PN 25, beiderseits Außengewinde, U-Form, Material: Stahl, 1.4571

A	PN / Bar	L1 / mm	L2 / mm	L3 / mm	L4 / mm	L5 / mm	Material	Art.Nr.
R1/4	25	230	56	14	170	135	Stahl	10090022
R1/4	25	230	56	14	170	135	1.4571	10090023
R1/2	25	230	56	16	170	135	Stahl	10090042
R1/2	25	230	56	18	165	135	1.4571	10090043

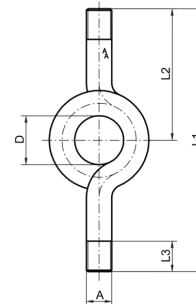


Fig. 95

Siphon, PN 25, male thread x male thread, circular, material: steel, 1.4571

A	L1 / mm	L2 / mm	L3 / mm	D	Material	Art.Nr.
R1/4	240	120	14	68	Stahl	10095022
R1/4	240	120	14	68	1.4571	10095023
R1/2	260	130	20	56	Stahl	10095042
R1/2	260	130	20	56	1.4571	10095043

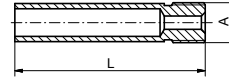


Fig. 94

Siphon, straight, 100 mm long, material: steel, 1.4571

A	PN / Bar	L1 / mm	Material	Art.Nr.
G1/2	100	100	Stahl	10094042
G1/2	100	100	1.4571	10094043
G1/2	100	100	Stahl	100941042
G1/2	100	100	1.4571	100941043

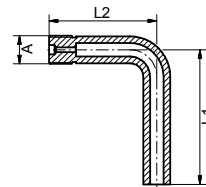


Fig. 99

Siphon, elbow, 100 x 80 mm long, material: steel, 1.4571

A	PN / Bar	L1 / mm	L2 / mm	Material	Art.Nr.
G1/2	100	100	80	Stahl	10099042
G1/2	100	100	80	1.4571	10099043
G1/2	100	100	80	Stahl	100991042
G1/2	100	100	80	1.4571	100991043