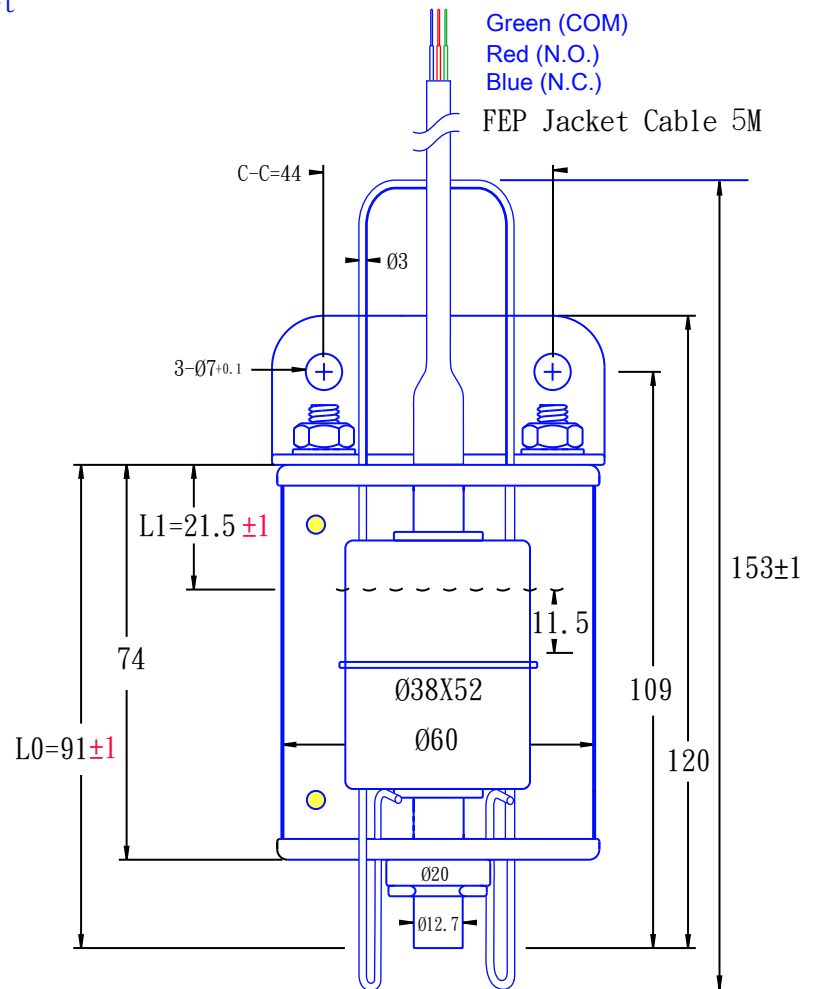


Bilge Switch With Lifting Bracket



LCG-1036-C5

Technical Data:	
Mounting Style	Bracketed Mounting
Slosh Shield Material	Acrylic Ø 60x3(t)
Float & Stem Material	SUS 316 & SUS 304
Maximum Temperature	-20°C ~ 80°C
Maximum Pressure	20 bar
Float S.G.	0.7
Minimum Fluid S.G.	0.8
Electrical Data:	
Contact Form	Form C , SPDT
Switching Power Max. VA	60VA
Switching Voltage AC/DC Max. V	400 Vac/dc
Switching Current Max. A	1.0A
Carrying Current Max.	2.0A
Electrical Termination	VDE H05SS FEP-Jacket Cable 5M
IP Protection	IP 68
Weight	-Approx. 320 g