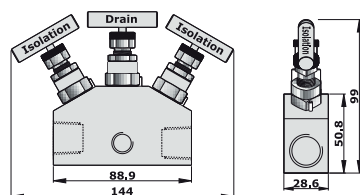
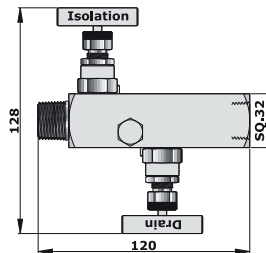
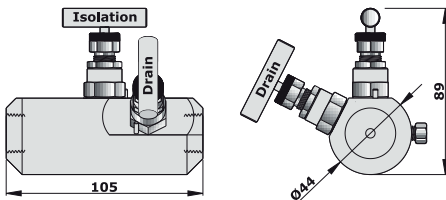
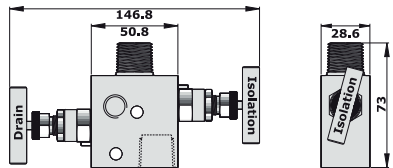
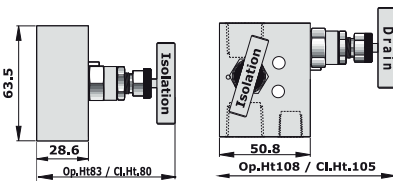
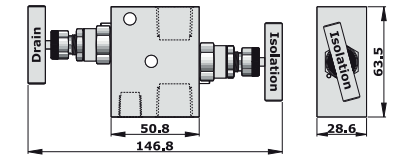


TWO VALVE INSTRUMENT MANIFOLDS
 Remote / Direct Mounted Differential Pressure Manifolds
 Low Pressure 6000 psig (414 barg)
 * High pressure up to 10,000 psi available on request.



PRODUCT CODE : C2VIM RM 01
 Remote Mounting



Product Code	Inlet	Outlet	Bleed/Vent/Test
C2VIM RM-01	1/2" NPT(F)	1/2" NPT(F)	1/4" NPT(F)

PRODUCT CODE : C2VIM RM 02
 Remote Mounting



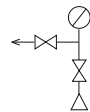
Product Code	Inlet	Outlet	Bleed/Vent/Test
C2VIM RM-02	1/2" NPT(F)	1/2" NPT(F)	1/4" NPT(F)
C2VIM RM-02A	1/2" NPT(F)	1/2" NPT(F)	1/2" NPT(F)

PRODUCT CODE : C2VIM RM 03
 Remote Mounting



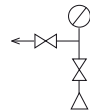
Product Code	Inlet	Outlet	Bleed/Vent/Test
C2VIM RM-03	1/2" NPT(F)	1/2" NPT(M)	1/4" NPT(F)
C2VIM RM-03A	1/2" NPT(M)	1/2" NPT(F)	1/4" NPT(F)

PRODUCT CODE : C2VIM RM 04
 Remote Mounting



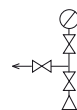
Product Code	Inlet	Outlet	Bleed/Vent/Test
C2VIM RM-04	1/2" NPT(F)	1/2" NPT(F)	1/4" NPT(F)
C2VIM RM-04A	1/4" NPT(F)	1/4" NPT(F)	1/4" NPT(F)

PRODUCT CODE : C2VIM RM 05
 Remote Mounting



Product Code	Inlet	Outlet	Bleed/Vent/Test
C2VIM RM-05	1/2" NPT(M)	1/2" NPT(F)	1/4" NPT(F)
C2VIM RM-05A	1/2" NPT(F)	1/2" NPT(M)	1/4" NPT(F)
C2VIM RM-05B	1/2" SW	1/2" NPT(F)	1/4" NPT(F)
C2VIM RM-05C	1/2" NPT(F)	1/2" NPT(F)	1/4" NPT(F)
C2VIM RM-05D	1/2" NPT(M)	1/2" NPT(M)	1/4" NPT(F)

PRODUCT CODE : C2VIM RM 06-06A
 Remote Mounting



Product Code	Inlet	Outlet	Bleed/Vent/Test
C2VIM RM-06	1/2" NPT(M)	1/2" NPT(F)	1/4" NPT(F)
C2VIM RM-06A	1/2" NPT(M)	1/2" NPT(F)	1/4" NPT(F)

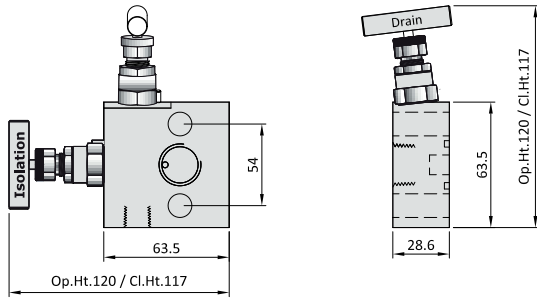
DIMENSIONS FOR REFERENCE ONLY, SUBJECT TO CHANGE.

TWO VALVE INSTRUMENT MANIFOLDS

Remote / Direct Mounted Differential Pressure Manifolds

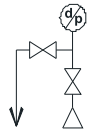
Low Pressure 6000 psig (414 barg)

* High pressure up to 10,000 psi available on request.

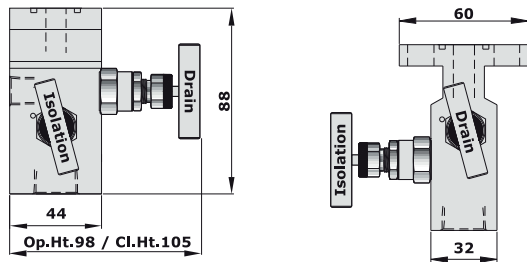


PRODUCT CODE : C2VIM DM 01

Direct Mounting

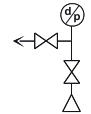


Product Code	Inlet	Outlet	Bleed/Vent/Test
C2VIM DM-01	1/2" NPT(F)	Flanged	1/4" NPT(F) with two plug

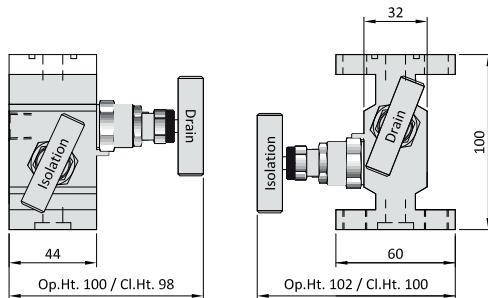


PRODUCT CODE : C2VIM DM 02

Direct Mounting

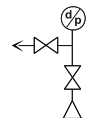


Product Code	Inlet	Outlet	Bleed/Vent/Test
C2VIM DM-02	1/2" NPT(F)	Flanged	1/4" NPT(F) with two plug

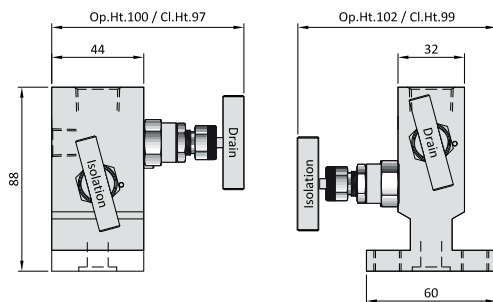


PRODUCT CODE : C2VIM DM 03

Direct Mounting

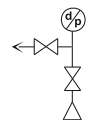


Product Code	Inlet	Outlet	Bleed/Vent/Test
C2VIM DM-03	1/2" NPT(F)	Flanged	1/4" NPT(F) with two plug



PRODUCT CODE : C2VIM DM 04

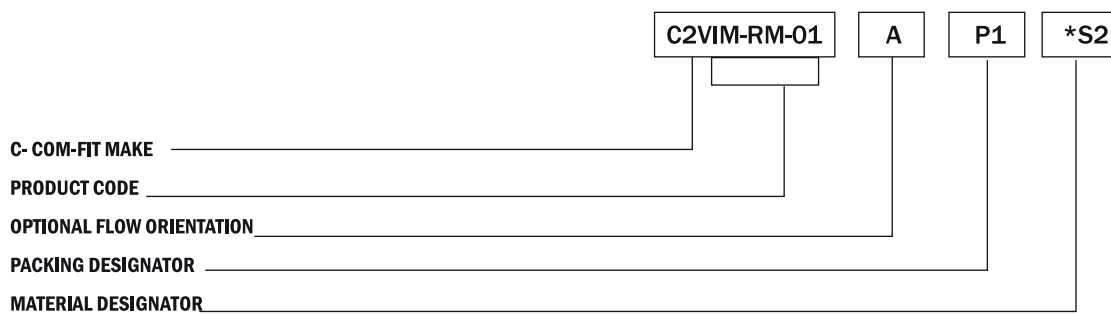
Direct Mounting



Product Code	Inlet	Outlet	Bleed/Vent/Test
C2VIM DM-04	Flanged	1/2" NPT(F)	1/4" NPT(F)
C2VIM DM-04A	Flanged	1/2" NPT(M)	1/4" NPT(F)



ORDERING CODE FOR INSTRUMENT MANIFOLD VALVE



PACKING	DESIGNATOR
PTFE - Temp - 250° F to +450° F _____ Standard by default	
GRAFOIL - Temp 700° F _____	P1
PEEK - Temp 572° F _____	P2
BUNA-N- Temp 35° F to 250° F _____	P3
VITON - Temp 20° F to +400° F _____	P4

Note : * No need to designate 'S1' for SS 316 material.

MATERIAL	DESIGNATOR
STEEL	S
SS 316	S1
SS 316L	S2
SS 316/SS 316L	S1S2
SS 304	S3
SS 304L	S4
CARBON STEEL	S5
P/F321	S6
SS 347	S7
P/F 11	S8
P/F 22	S9
P/F 5	S10
A105N	S11
P/F 91	S12
Lf2	LF2
ALUMINIUM	AL
BRASS	B
ALLOY 20	C20
ALLOY C-276	HC
ALLOY 600	INC
ALLOY 825	INC1
ALLOY 625	INC2
TITANIUM	TI
MONEL 400	M
DUPLEX-F60 / S32205	D
DUPLEX-F51 / S31803	D1
DUPLEX-F53 / S32750	D3
DUPLEX F55 / S32760	D5
NACE MR-0175	NM
NACE MR0103	NM1