

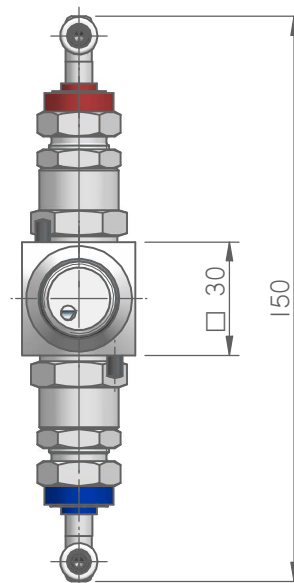
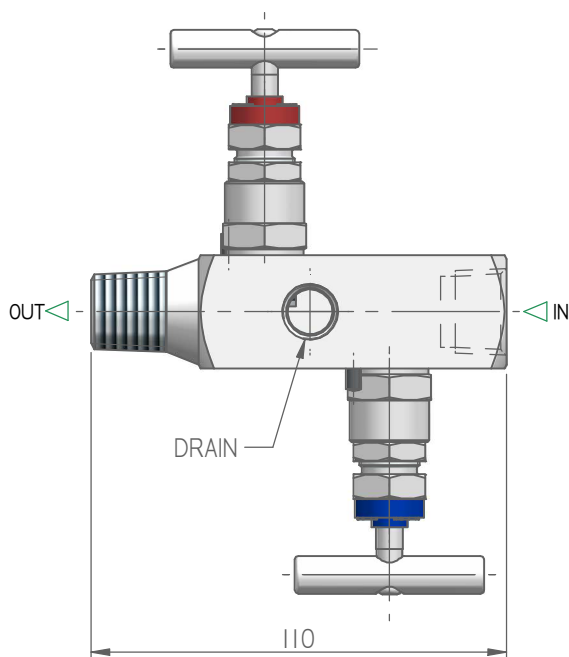
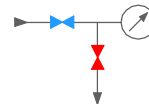
MODEL:

M241

BLOCK & BLEED MANIFOLD



This manifold is used to connect a static pressure instrument to process fluid. Composed of primary block valve and secondary valve for instrument venting or calibrating.



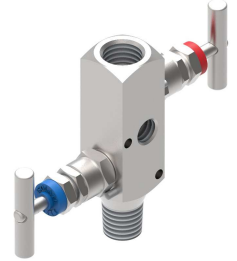
MODEL SELECTION

MODEL	RATING	MATERIAL	PACKING	IN	OUT	VENT	CODE	WEIGHT	NOTE
M241	6K psi	AISI 316L	PTFE	1/2" NPT-F	1/2" NPT-M	1/4" NPT-F	M241-06ST8N8N4	0,9 Kg	Packing material PTFE as standard max temperature 180 °C. The dimensions shown apply only to the illustrated valve – if you need the dimensions for your individual type or should you still not find your options at all please contact the factory.
		ASTM A105					M241-06AT8N8N4		
		F51					M241-06DT8N8N4		
		F55					M241-06ET8N8N4		
		ALLOY 400					M241-06FT8N8N4		
		C276					M241-06TT8N8N4		
		6MO					M241-06HT8N8N4		
		I625					M241-06IT8N8N4		
	10K psi	AISI 316L					M241-10ST8N8N4		
		ASTM A105					M241-10AT8N8N4		
		F51					M241-10DT8N8N4		
		F55					M241-10ET8N8N4		
		ALLOY 400					M241-10FT8N8N4		
		C276					M241-10TT8N8N4		
		6MO					M241-10HT8N8N4		
		I625					M241-10IT8N8N4		

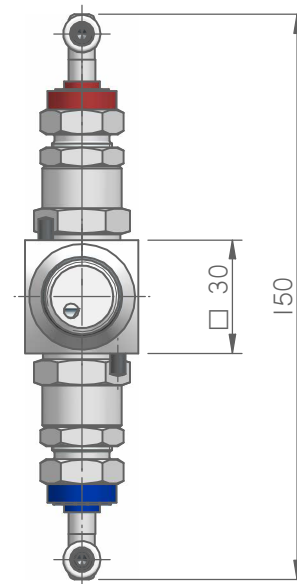
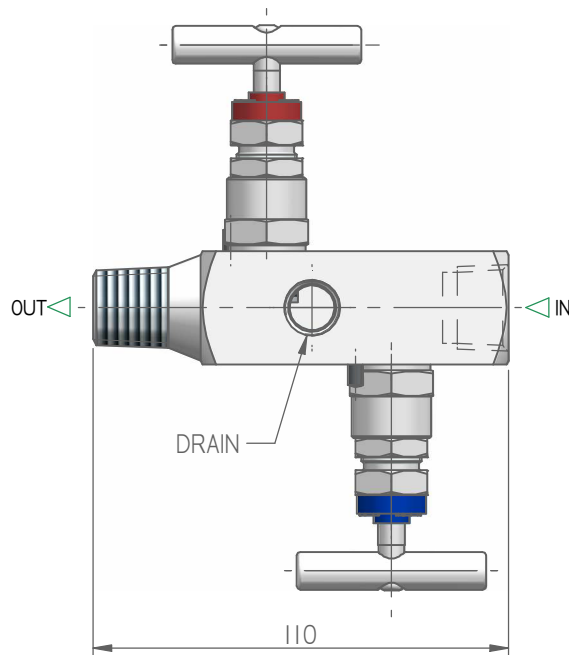
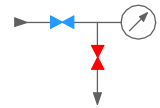
I.T.E. s.r.l. COMMITS ITSELF TO CONSTANTLY IMPROVE ITS PRODUCTS AND THEREFORE IT RESERVES THE RIGHT TO MODIFY DATA, FEATURES WITHOUT NOTICE.

MODEL: M241

BLOCK & BLEED MANIFOLD



This manifold is used to connect a static pressure instrument to process fluid. Composed of primary block valve and secondary valve for instrument venting or calibrating.



MODEL SELECTION

MODEL	RATING	MATERIAL	PACKING	IN	OUT	VENT	CODE	WEIGHT	NOTE
M241	6K psi	AISI 316L	GRAPHOIL	1/2" NPT-F	1/2" NPT-M	1/4" NPT-F	M241-06SG8N8N4	0,9 Kg	Packing material GRAPHOIL as standard max temperature 500 °C. The dimensions shown apply only to the illustrated valve – if you need the dimensions for your individual type or should you still not find your options at all please contact the factory.
		ASTM A105					M241-06AG8N8N4		
		F51					M241-06DG8N8N4		
		F55					M241-06EG8N8N4		
		ALLOY 400					M241-06FG8N8N4		
		C276					M241-06GG8N8N4		
		6MO					M241-06HG8N8N4		
		I625					M241-06IG8N8N4		
	10K psi	AISI 316L					M241-10SG8N8N4		
		ASTM A105					M241-10AG8N8N4		
		F51					M241-10DG8N8N4		
		F55					M241-10EG8N8N4		
		ALLOY 400					M241-10FG8N8N4		
		C276					M241-10GG8N8N4		
		6MO					M241-10HG8N8N4		
		I625					M241-10IG8N8N4		

I.T.E. s.r.l. COMMITS ITSELF TO CONSTANTLY IMPROVE ITS PRODUCTS AND THEREFORE IT RESERVES THE RIGHT TO MODIFY DATA, FEATURES WITHOUT NOTICE.

PandID® B.V. | ☎: +31 174 280 371 | ✉: info@pandid.nl | 🌐: www.pandid.nl | www.lineblind.eu

DWG NAME: LADM241.001.dft - REV.: - DATE: 23/06/2017 - I.T.E. s.r.l. COMMITS ITSELF TO CONSTANTLY IMPROVE ITS PRODUCTS AND THEREFORE IT RESERVES THE RIGHT TO MODIFY DATA, FEATURES WITHOUT NOTICE.