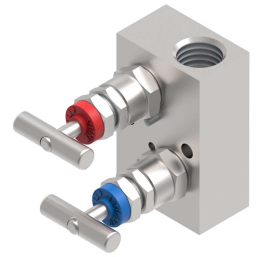


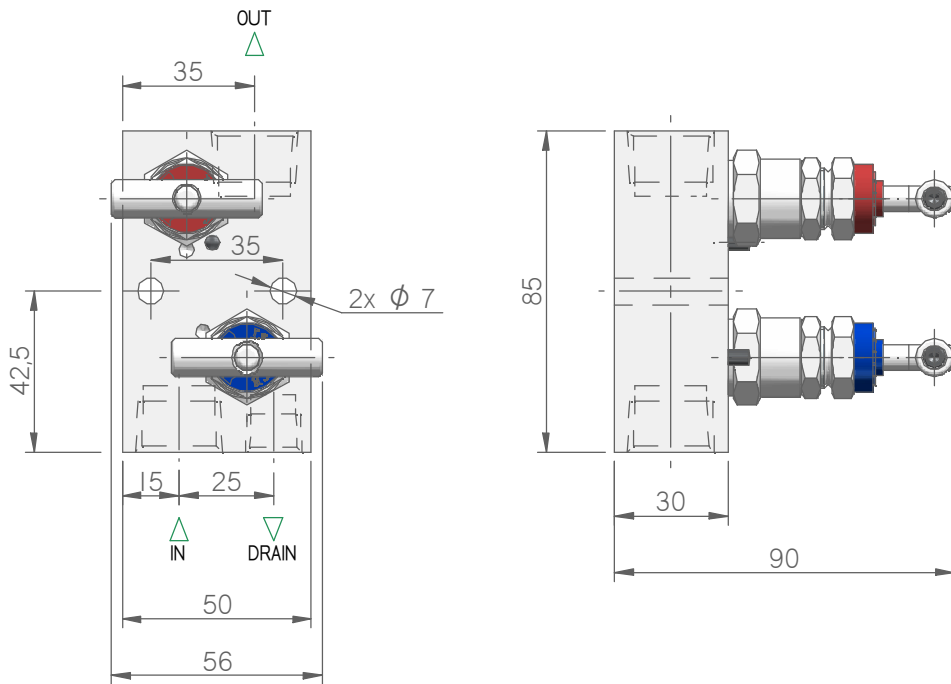
MODEL:

M252

REMOTE MOUNTED MANIFOLD



This manifold are designed for mounting to Pressure Gauges, Pressure Transmitters or Pressure Switches. Composed of primary block valve and secondary valve for instrument venting or calibrating.



MODEL SELECTION

| MODEL | RATING | MATERIAL | PACKING | IN | OUT | VENT | CODE | WEIGHT | NOTE |
|-------|---------|-----------|---------|------------|------------|------------|----------------|--------|--|
| M252 | 6K psi | AISI 316L | PTFE | 1/2" NPT-F | 1/2" NPT-F | 1/4" NPT-F | M252-06ST8N8N4 | 1,2 Kg | Packing material PTFE as standard max temperature 180 °C. The dimensions shown apply only to the illustrated valve – if you need the dimensions for your individual type or should you still not find your options at all please contact the factory. |
| | | ASTM A105 | | | | | M252-06AT8N8N4 | | |
| | | F51 | | | | | M252-06DT8N8N4 | | |
| | | F55 | | | | | M252-06ET8N8N4 | | |
| | | ALLOY 400 | | | | | M252-06FT8N8N4 | | |
| | | C276 | | | | | M252-06GT8N8N4 | | |
| | | 6MO | | | | | M252-06HT8N8N4 | | |
| | | I625 | | | | | M252-06IT8N8N4 | | |
| | 10K psi | AISI 316L | | | | | M252-10ST8N8N4 | | |
| | | ASTM A105 | | | | | M252-10AT8N8N4 | | |
| | | F51 | | | | | M252-10DT8N8N4 | | |
| | | F55 | | | | | M252-10ET8N8N4 | | |
| | | ALLOY 400 | | | | | M252-10FT8N8N4 | | |
| | | C276 | | | | | M252-10GT8N8N4 | | |
| | | 6MO | | | | | M252-10HT8N8N4 | | |
| | | I625 | | | | | M252-10IT8N8N4 | | |

I.T.E. s.r.l. COMMITS ITSELF TO CONSTANTLY IMPROVE ITS PRODUCTS AND THEREFORE IT RESERVES THE RIGHT TO MODIFY DATA, FEATURES WITHOUT NOTICE.

REMOTE MANIFOLD - CODIFICA

1 2 3 4 5 6 7 8 9 10 11 12 13 14 15 16

ESEMPIO:

M 2 5 2 - 0 6 S T 8 N 8 N 4

MODEL

M252 REMOTE MANIFOLD 2 VLV 50x30 I/O 180°

RATING

06 Serie 6000
10 Serie 10000

MATERIAL

S Aisi 316L
A A105
D F51
E F55
F Monel 400
G C276 Hastelloy
H 6 Mo/F44
I Inconel 625

PACKING

T Teflon
G Graphoil

IN

4 1/4"
6 3/8"
8 1/2"
12 3/4"
20 M20 x 1,5

THREAD

N NPT
I BSPP GAS (ISO 1179)
K BSPT R/RC (ISO 7)
B Butt weld
S Socket Weld
M Metrico

OUT (Same as "IN" standard)

4 1/4"
6 3/8"
8 1/2"
12 3/4"
20 M20 x 1,5

THREAD (Same as "IN" standard)

N NPT
I BSPP GAS (ISO 1179)
K BSPT R/RC (ISO 7)
B Butt weld
S Socket Weld
M Metrico

DRAIN

/
4 1/4 NPT
8 1/2 NPT

OPTIONS

/
B All component 316L
C Special Testing
D Custom marking
E T-Bar 316L
L Lox cleaning
TI Isolate Anti-tamper
K Padlock for all anti tamper bonnet
T Mounted plug drain
KT Padlock for all T-bar bonnet
CR Criogenic Version