



# MX2515, MX2516, MX2517 & MX2518 HIGH TEMPERATURE EXPLOSION RELIEF VALVE

**Proven in service for long life and efficiency**

**Integral safety deflection cover**

**1.25 PSI opening pressure standard, others available**

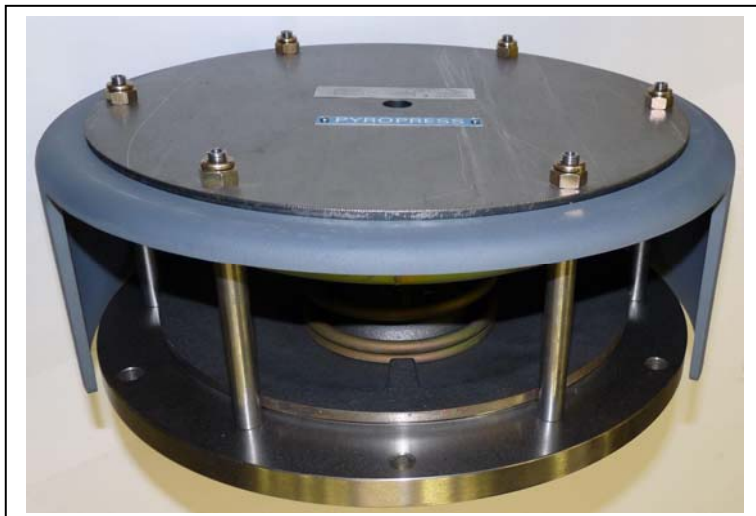
**Effective relief area - 490 cm<sup>2</sup>**

**Robust construction - Fast acting**

**Integral indicator option**

**Option of high temperature switch**

**Inconel spring**



## INTRODUCTION

To avoid a dangerous pressure rise and resultant damage in the event of an explosion occurring in exhausts and silencers it is necessary to provide pressure relief valves of an ample area.

This valve is suitable for high temperature applications and has been developed from our crank-case explosion relief valves which have been manufacturer for over 50 years. The design incorporates a quick acting, spring loaded, stemless relief valve, which ensures frictionless valves operation and eliminates any possible danger of sticking. These valves have a long established track record in service and are constructed to withstand exhaust gas temperatures of 540°C

## PART NUMBER BREAKDOWN

# MX2517 / 1.25

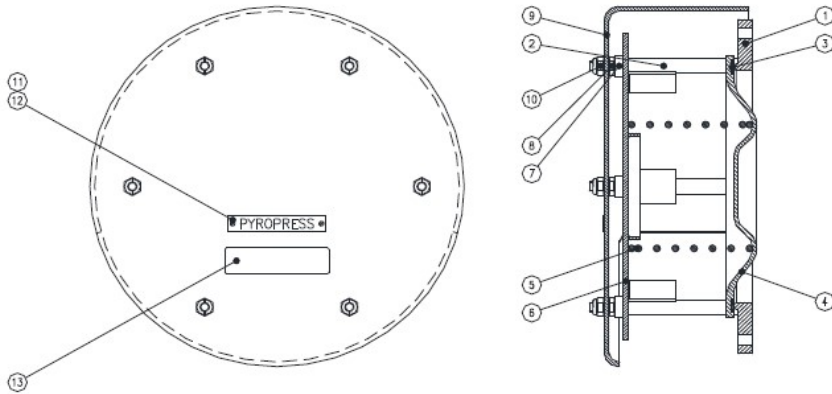
**MX2515** WITH MICROSWITCH AND INDICATOR, AUTO RESET  
**MX2516** WITH MICROSWITCH AND INDICATOR, MANUAL RESET  
**MX2517** VALVE WITH INDICATOR, MANUAL RESET  
**MX2518** VALVE WITHOUT INDICATOR

**OPENING PRESSURE**  
**1.25 PSI** - Standard  
**2.0 PSI** – special  
**3.0 PSI** – special

IT MUST BE EMPHASIZED THAT THE DEGREE OF PROTECTION PROVIDED BY SUCH VALVES IN EXHAUST AND SILENCER APPLICATIONS OF A GIVEN VOLUME DEPEND ON THE NUMBER AND SIZE OF VALVES FITTED AND THEIR RELATIVE LOCATION. TO OBTAIN THE OPTIMUM PROTECTION FOR YOUR SYSTEM PLEASE PROVIDE A DRAWING OR SKETCH TO OUR SALES ENGINEERS. WE WILL ENSURE THAT THE REQUIRED EFFECTIVE RELIEF AREA FOR THE VOLUME OF YOUR SYSTEM IS CORRECTLY CALCULATED.

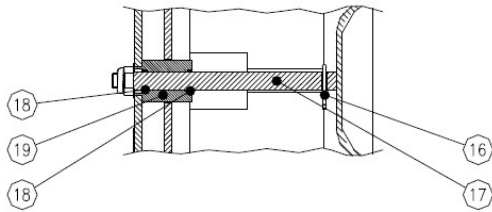
# DRAWING

## MX2518 STANDARD VALVE



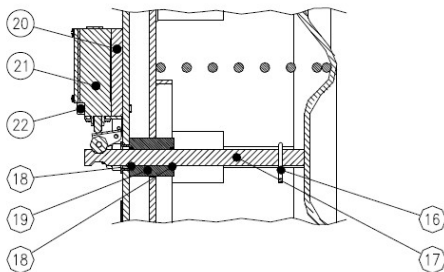
13	LABEL	1
12	PAN HEAD SCREW	2
11	LABEL	1
10	LOCKNUT	6
9	VALVE COVER	1
8	HALF NUT	6
7	BOSS	6
6	SPRING RETAINING PLATE	1
5	SPRING	1
4	VALVE DISC	1
3	SEALING RING	1
2	VALVE GUIDE	6
1	VALVE SEAT	1
REF	DESCRIPTION	QTY

## MX2517 VALVE WITH MANUAL RESET INDICATOR



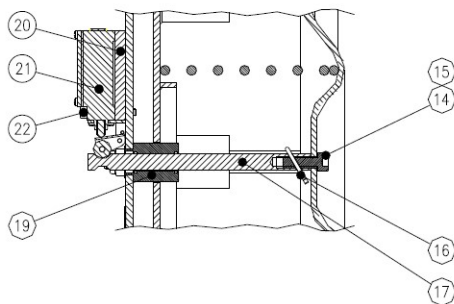
19	GUIDE BUSH	1
18	O-RING	2
17	INDICATOR	1
16	SPLIT PIN	1
REF	DESCRIPTION	QTY

## MX2516 VALVE WITH MANUAL RESET INDICATOR AND SWITCH



22	SOCKET HEAD CAP SCREW	2
21	SWITCH	1
20	SWITCH MOUNTING PLATE	1
19	GUIDE BUSH	1
18	O-RING	2
17	INDICATOR	1
16	SPLIT PIN	1
REF	DESCRIPTION	QTY

## MX2515 VALVE WITH AUTO RESET INDICATOR AND SWITCH



22	SOCKET HEAD CAP SCREW	2
21	SWITCH	1
20	SWITCH MOUNTING PLATE	1
19	GUIDE BUSH	1
17	INDICATOR	1
16	SPLIT PIN	1
15	CORRUSEAL GASKET	1
14	SOCKET HEAD CAP SCREW	1
REF	DESCRIPTION	QTY